



# 2016 WATER QUALITY REPORT

WATER TESTING PERFORMED IN 2015

WARREN COUNTY WATER DISTRICT

[warrenwater.com](http://warrenwater.com)

PWSID KY 1140487



Warren County  
Water District



## WHERE DOES MY WATER COME FROM?

Warren County Water District purchases the water delivered to its customers from Bowling Green Municipal Utilities (BGMU). BGMU uses the Big Barren River, a surface water source, as its source of raw water. The Big Barren River flows out of Barren River Reservoir, a flood control lake designed to help prevent flooding in the populated areas west of Allen and Barren Counties. Drakes Creek joins Big Barren River approximately three miles above BGMU's raw water intake. Drakes Creek is fed by Trammel Creek and flows north out of Simpson County, Kentucky. These three surface water bodies are the sources of water that are treated by BGMU.

The Safe Drinking Water Act, amended in 1996, requires Community Public Water Systems to prepare a source water assessment report. This report includes a Source Water Assessment Plan (SWAP) that summarizes our susceptibility to contamination. An analysis indicates that BGMU's system susceptibility to contamination is generally moderate. Areas of concern include potential contaminant sources such as bridges, underground storage tanks, an inactive landfill, oil and gas wells, a KPDES permitted discharger, and agricultural chemical use in the areas near and surrounding the raw water intake.

The final source water assessment plan with complete information on BGMU's system susceptibility to potential sources of contamination is available for review at our office or the Barren River Area Development District Office located at 177 Graham Avenue in Bowling Green, Kentucky.

Our goal is to provide the best water and customer service to Warren County residents. Our customers are our top priority and an important part of our everyday efforts. We continually look for ways to stay involved in our community and to develop ways to educate customers on water quality. Our website, warrenwater.com, provides customers access to water quality information and facts about their water utility. Also, general brochures, Consumer Confidence Reports (CCRs), and various other Warren Water publications are available for customer service and educational purposes.

## WATER QUALITY

*Delivering Quality and Commitment in Every Drop!*

Warren Water continually performs numerous tests to ensure your drinking water is safe. Warren Water tests the purity of the water over 1000 times a year to ensure the safety of your drinking water. In 2015, the water was tested for over 100 regulated contaminants, and met or exceeded all state and federal quality standards.

## WHY ARE THERE CONTAMINANTS IN MY WATER?

Drinking water, including bottled water, may reasonably be expected to contain at least small amounts of some contaminants. The presence of contaminants does not necessarily indicate that water poses a health risk.

More information about contaminants and potential health effects may be obtained by calling the Environmental Protection Agency's Safe Drinking Water Hotline at 800-426-4791.

The sources of drinking water, both tap and bottled water, include rivers, lakes, streams, ponds, reservoirs, springs and wells. As water travels over the surface of the land or through the ground, it dissolves naturally occurring minerals and, in some cases, radioactive material, and may pick up substances resulting from the presence of animals or from human activity. To ensure that tap water is safe to drink, U.S. EPA prescribes regulations that limit the amount of certain contaminants in water provided by public water systems. U.S. FDA regulations establish limits for contaminants in bottled water that shall provide the same protection for public health.

## WHAT ARE THESE CONTAMINANTS? MICROBIAL CONTAMINANTS

Viruses and bacteria, that may come from sewage treatment plants, septic systems, agricultural livestock operations, and wildlife.

## INORGANIC CONTAMINANTS

Salts and metals, that may be naturally occurring or result from urban stormwater runoff, industrial or domestic waste water discharges, oil and gas production, mining, or farming.

## PESTICIDES AND HERBICIDES

May come from a variety of sources such as agricultural, urban stormwater runoff, and residential uses.

## ORGANIC CHEMICAL CONTAMINANTS

Synthetic and volatile organic chemicals, which are by products of industrial processes and petroleum production, and may also come from gas stations, urban stormwater runoff, and septic systems.

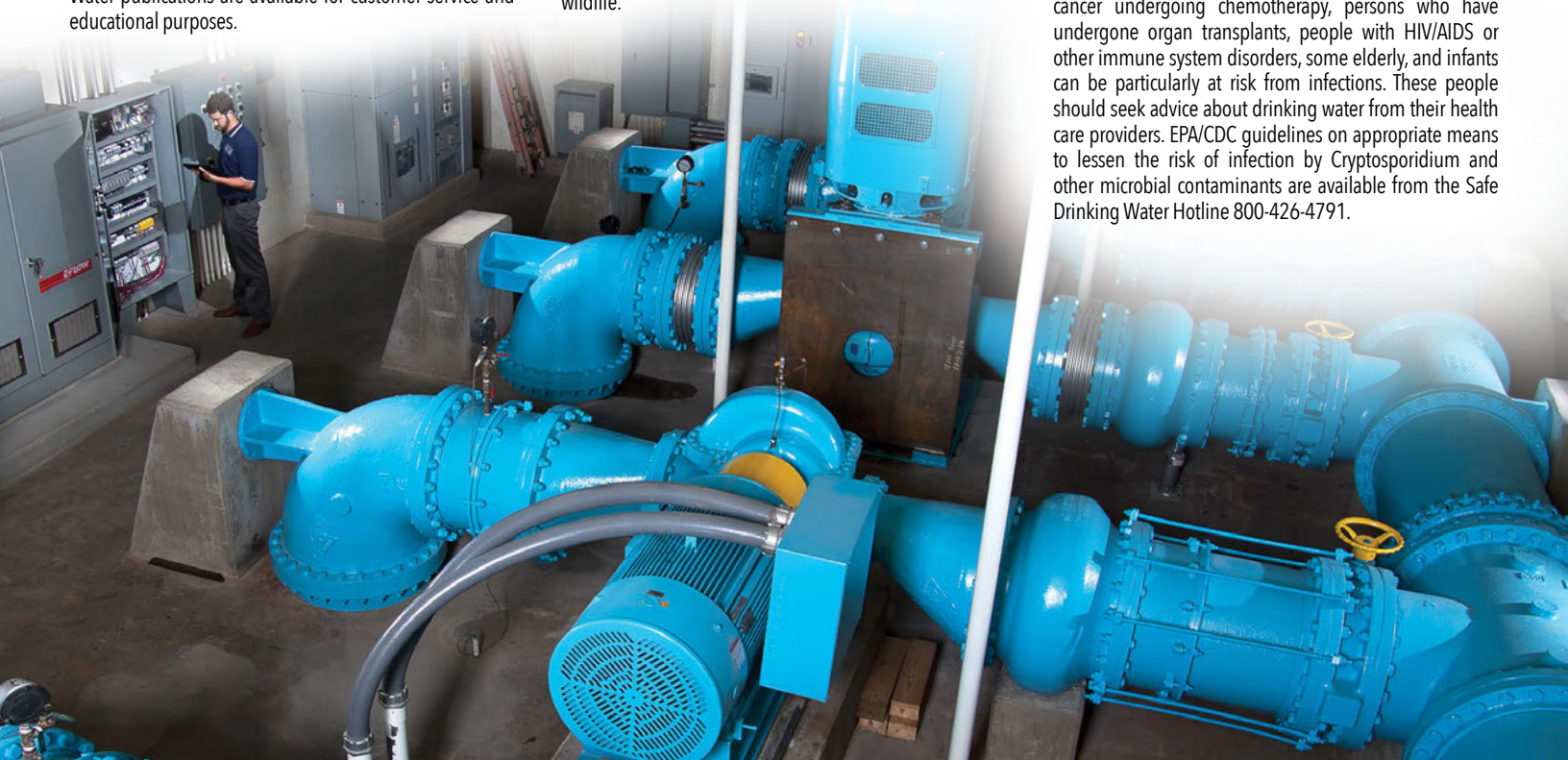
## RADIOACTIVE CONTAMINANTS

May be naturally-occurring or be the result of oil and gas production and mining activities.

## SPECIAL HEALTH INFORMATION

If present, elevated levels of lead can cause serious health problems, especially for pregnant women and young children. Lead in drinking water is primarily from materials and components associated with service lines and home plumbing. Warren Water is responsible for providing high quality drinking water, but cannot control the variety of materials used in plumbing components. When your water has been sitting for several hours, you can minimize the potential for lead exposure by flushing your tap for 30 seconds to 2 minutes before using water for drinking or cooking. If you are concerned about lead in your water, you may wish to have your water tested. Information on lead in drinking water, testing methods, and steps you can take to minimize exposure is available from the Safe Drinking Water Hotline or at <http://www.epa.gov/safewater/lead>.

Some people may be more vulnerable to contaminants in drinking water than the general population. Immunocompromised persons such as persons with cancer undergoing chemotherapy, persons who have undergone organ transplants, people with HIV/AIDS or other immune system disorders, some elderly, and infants can be particularly at risk from infections. These people should seek advice about drinking water from their health care providers. EPA/CDC guidelines on appropriate means to lessen the risk of infection by Cryptosporidium and other microbial contaminants are available from the Safe Drinking Water Hotline 800-426-4791.



# 2015 TEST RESULTS

The data presented in this report are from the most recent testing done in accordance with Administrative Regulation 401 KAR Chapter 8. As authorized and approved by EPA, the State has reduced monitoring requirements for certain contaminants to less often than once per year because the concentrations of these contaminants are not expected to vary significantly from year to year. Some of the data in this table, though representative, may be more than one year old. Unless otherwise noted, the report level is the highest level detected.

Contaminant (Units)	Allowable Levels	Source	Highest Single Measurement	Lowest Monthly %	Violation	Likely Source		
Turbidity (NTU) (Continuously)	Never more than 1 NTU. Less than 0.3 NTU's 95% of monthly samples	BGMU	0.111	100	No	Soil Runoff		
<b>Regulated Contaminant Test Results</b>								
Contaminant (Units)	MCL	MCLG	Source	Report Level	Range of Detection	Date of Sample	Violation	Likely Source
<b>Microbial Contaminants</b>								
Total Coliform Bacteria (% positive samples)	5%	0	WCWD	4.96%	NA	Jun-15	No	Naturally present in the environment
<b>Radioactive Contaminants</b>								
Alpha Emitters (pCi/L) (Gross Alpha)	15	0	BGMU	2.1	0.11 to 2.1	2007	No	Erosion of natural deposits
Combined Radium (pCi/L) (Measured as Radium 228)	5	0	BGMU	1.06	0.85 to 1.06	2007	No	Erosion of natural deposits
<b>Inorganic Contaminants</b>								
Copper (ppm) (Level found is 90th percentile. No sites exceeded the AL)	AL = 1.3	1.3	WCWD	0.029	0.001 to 0.054	Aug-15	No	Corrosion of household plumbing systems
Lead (ppb) (Level found is 90th percentile. No sites exceeded the AL)	AL = 15	0	WCWD	1.3	0 to 8	Aug-15	No	Corrosion of household plumbing systems, erosion of natural deposits
Nitrate (ppm)	10	10	BGMU	1.9	1.9	2015	No	Runoff from fertilizer use; leaching from septic tanks, sewage; erosion of natural deposits
<b>Disinfectants/Disinfection Byproducts and Precursors</b>								
Total Organic Carbon (ppm) (measured as ppm but reported as a ratio)	TT*	N/A	BGMU	1.23 Lowest Average	1.00 to 2.45 Monthly Ratios	2015	No	Naturally present in the environment
Chlorine (ppm)	MRDL <sub>4</sub>	MRDLG <sub>4</sub>	WCWD	0.8 Highest Average	0.5 to 1.0	2015	No	Water additive used to control microbes
HAA's [haloacetic acids] (ppb) (reported as highest locational running average)	60	N/A	WCWD	70	15 to 96	2015	Yes	By-product of drinking water chlorination
TTHM [total trihalomethanes] (ppb) (reported as highest locational running average)	80	N/A	WCWD	70	20 to 98	2015	No	By-product of drinking water chlorination
<b>Unregulated Contaminates (ppb)**</b>								
Chromium, Total	N/A	N/A	WCWD	0.28	0 to .39	Jan-15	No	
Chromium-6	N/A	N/A	WCWD	0.12	0.10 to 0.14	Jan-15	No	
Strontium	N/A	N/A	WCWD	133	100 to 160	Jan-15	No	
Vanadium	N/A	N/A	WCWD	0.30	0 to 0.51	Jan-15	No	

\*Ratio is the monthly % TOC removal achieved to the % TOC removal required. Annual average of the monthly ratios must be 1.00 or greater for compliance.

\*\*Our water system has sampled for a series of unregulated contaminants. Unregulated contaminants are those that don't yet have a drinking water standard set by EPA. The purpose of monitoring for these contaminants is to help EPA decide whether the contaminants should have a standard. As our customers, you have a right to know that these data are available. If you are interested in examining the results, please contact our office during normal business hours.

VIOLATION TYPE: Haloacetic Acids (HAAS). Violation period: 07/01/2015 - 09/30/2015

Some people who drink water containing haloacetic acids in excess of the MCL over many years may have an increased risk of getting cancer.

Water samples showed that the amount of this contaminant in our drinking water was above its standard (called a maximum contaminant level and abbreviated MCL) for the period indicated.

## Terms to know when reading the water test results:

### AL (ACTION LEVEL)

The concentration of a contaminant which, if exceeded, triggers treatment or other requirements which a water system shall follow.

### BDL (BELOW DETECTION LEVEL)

Laboratory analysis indicates that the contaminant is not present

### MCL (MAXIMUM CONTAMINANT LEVEL)

The highest level of a contaminant that is allowed in drinking water. MCLs are set as close to the MCLGs as feasible using the best available treatment technology.

### MCLG (MAXIMUM CONTAMINANT LEVEL GOAL)

The level of a contaminant in drinking water below which there is no known or expected risk to health. MCLGs allow for a margin of safety.

### MRDL (MAXIMUM RESIDUAL DISINFECTANT LEVEL)

The highest level of disinfectant allowed in drinking water. There is convincing evidence that addition of disinfectant is necessary for control of microbial contaminants.

### MRDLG (MAXIMUM RESIDUAL DISINFECTANT LEVEL GOAL)

The highest level of a drinking water disinfectant below which there is no known or expected risk to health. MRDLGs do not reflect the benefits of the use of disinfectants to control microbial contaminants.

### NTU (NEPHELOMETRIC TURBIDITY UNIT)

A measure of the clarity of water. Turbidity is monitored because it is a good indicator of the effectiveness of the filtration system.

### N/A (NOT APPLICABLE)

Does not apply.

### PPM (PARTS PER MILLION)

One part per million corresponds to one minute in two years, or a single penny in \$10,000.

### PPB (PARTS PER BILLION)

One part per billion corresponds to one minute in 2,000 years or a single penny in \$10,000,000.

### pCi/L (PICOCURIES PER LITER)

A measure of radioactivity in water.

### TT (TREATMENT TECHNIQUE)

A required process intended to reduce the level of a contaminant in drinking water.

# WARREN WATER'S COMMITMENT FLOWS THROUGH THE COMMUNITY

## WARREN WATER'S COMMITMENT TO COMMUNITY

We take great pride in providing water for homes and businesses throughout Warren County. Clean, safe drinking water is a mainstay of healthy, vibrant communities and we are committed to ensuring that these services are available and affordable to our region now and in the future. Our commitment also includes planning, construction and maintenance of our facilities to ensure that they are continuously meeting our customers' needs. We also believe that being good stewards of our natural resources is not only a choice, but an obligation. With a diverse blend of residential, agricultural, commercial and industrial customers, Warren Water serves over 27,000 water customers with an average of 7.8 million gallons of water each day. We also collect and dispose of wastewater from over 5,800 customers around the county. We consider it an honor to be your trusted water and wastewater provider.

## DELIVERING QUALITY AND COMMITMENT IN EVERY DROP

This Water Quality Report (also known as a Consumer Confidence Report) provides information on the quality of the water, and steps we take to ensure that quality. This brochure shows results from testing conducted from January through December 2015.

If you have any questions, please contact Alex Renick, Communications Administrator at 270-842-0052, or visit our website at warrenwater.com.

## AS WARREN COUNTY GROWS, WE CONTINUE TO GROW WITH IT

More than 75,000 residents already rely on Warren Water for safe, high quality drinking water. A large portion of that population also counts on us for access to reliable wastewater disposal services. Our mission, as always, is to provide efficient and reliable service for our growing customer base.

### INCREASING WATER SYSTEM CAPACITY AND RELIABILITY

In 2015, Warren Water completed designs for a new sewer system serving Alvaton Elementary School, Phil Moore Park and the Alvaton area, with construction to start in 2016. The Boyce and Plano tanks were also repainted.

Industrial growth in the South Industrial Park and a major expansion of General Motors will require upgrades to three lift stations in 2016. An aging sewer system will also require repair and rehabilitation in the Plum Springs area.

### HIGHWAY IMPROVEMENT PROJECTS

Warren Water worked in close collaboration with the Department of Transportation to complete several projects in 2015 including:

- 1-65 Transpark connector including water and sewer improvements to serve new industrial facilities in the Transpark.
- Three Springs Road widening.
- Bristow Road and Moorman Lane realignment.

## AUTOMATIC PAYMENT PLAN

### Make Every Drop Of Your Time And Money Count

#### WHAT ARE ADVANTAGES OF THE AUTOMATIC PAYMENT PLAN?

You can save time and money because your bill is automatically paid on its due date each month. This eliminates check writing, trips to pay your bill and/or postage, and any chance of a late charge or collection fee.

#### IS THE AUTOMATIC PAYMENT PLAN SAFE AND SECURE?

YES! Warren Water and our financial institutions are required to keep your banking information confidential.

#### WHAT IF I DON'T AGREE WITH THE AMOUNT ON MY WATER BILL

If you have any questions, contact our office at 270-842-0052 as soon as possible after receiving your bill.

#### WHEN WOULD THE AUTOMATIC PAYMENT PLAN START?

Automatic payments will begin with your next billing cycle.

A message will appear on your monthly statement when your account has been set up for automatic payment. If you would like to stop the Automatic Payment Plan, notify us and your request will become effective within 10 working days after receiving your notification.

#### ENTER TO WIN THE QUARTERLY \$25 PRIZE?

You will be entered into our quarterly drawings as soon as your account is set up on the Automatic Payment Plan. You will be eligible to win as long as your account stays on the Plan. Please inquire when you sign up. You could be the next winner!

## PAPERLESS BILLING & ONLINE PAYMENT

### Another Great Way To Manage Your Account

#### WHY SIGN UP?

- A monthly e-mail is sent when your bill is available to view and pay
- Provides online access to your most recent bills and payments
- No checks to write, stamps to buy or paper bills to file.
- View up to 24 months billing history.

#### HOW TO GET STARTED

- SAVE YOUR BILL! You will need your customer and account numbers.
- Login to our website: [www.warrenwater.com](http://www.warrenwater.com)
- Press Pay Bill / Access Account
- Register to see detailed account information and sign up for E-Billing
- Make only a quick payment. No registration required.

#### ADDITIONAL INFORMATION ON WATER QUALITY

Warren County Water District:  
270-842-0052 [warrenwater.com](http://warrenwater.com)

Kentucky Rural Water Association:  
270-843-2291 [krwa.org](http://krwa.org)

Kentucky Division of Water:  
502-564-3410 [water.ky.gov](http://water.ky.gov)

U.S. EPA Safe Drinking Water Hotline:  
800-426-4791 [epa.gov/safewater/hfacts.html](http://epa.gov/safewater/hfacts.html)

#### GET INVOLVED

We welcome your comments and the opportunity to serve you. Warren Water Board Meetings are open to the public and are held at 4 PM on the fourth Tuesday of every month at the Warren Water office located at 523 US 31 W Bypass, Bowling Green, KY. Please call us at 270-842-0052.

#### THE WARREN WATER BOARD OF COMMISSIONERS

Henry Honaker - Chairman  
Thomas A. Donnelly - Vice Chairman  
Glen Johnson - Secretary  
Joe W. Taylor, Sr. - Treasurer  
R. Harvey Johnston, III

#### ATTORNEY

Franklin Hampton Moore, Jr.

#### WARREN WATER STAFF

John Dix - General Manager  
Ryan Leisey - Manager of Engineering & Construction  
Jeff Peeples - Manager of Finance & Administration  
Alex Renick - Communications Administrator

#### ATTENTION

Este informe contiene información muy importante sobre la calidad de su agua potable. Tradúzcalo o hable con alguien que lo entienda bien.



Warren County  
Water District